



B&Q TOWERS

Building with vision, quality, and pride.



FUTURE HOMES LIMITED

About Us

FutureHomesLimited offers everything you have ever wanted when it comes to absolute luxury. With our customers in mind, we strive to establish a solid industry pillar that builds with vision, quality, and pride at the forefront of all business operations.



MODERN STYLE ARCHITECTURE

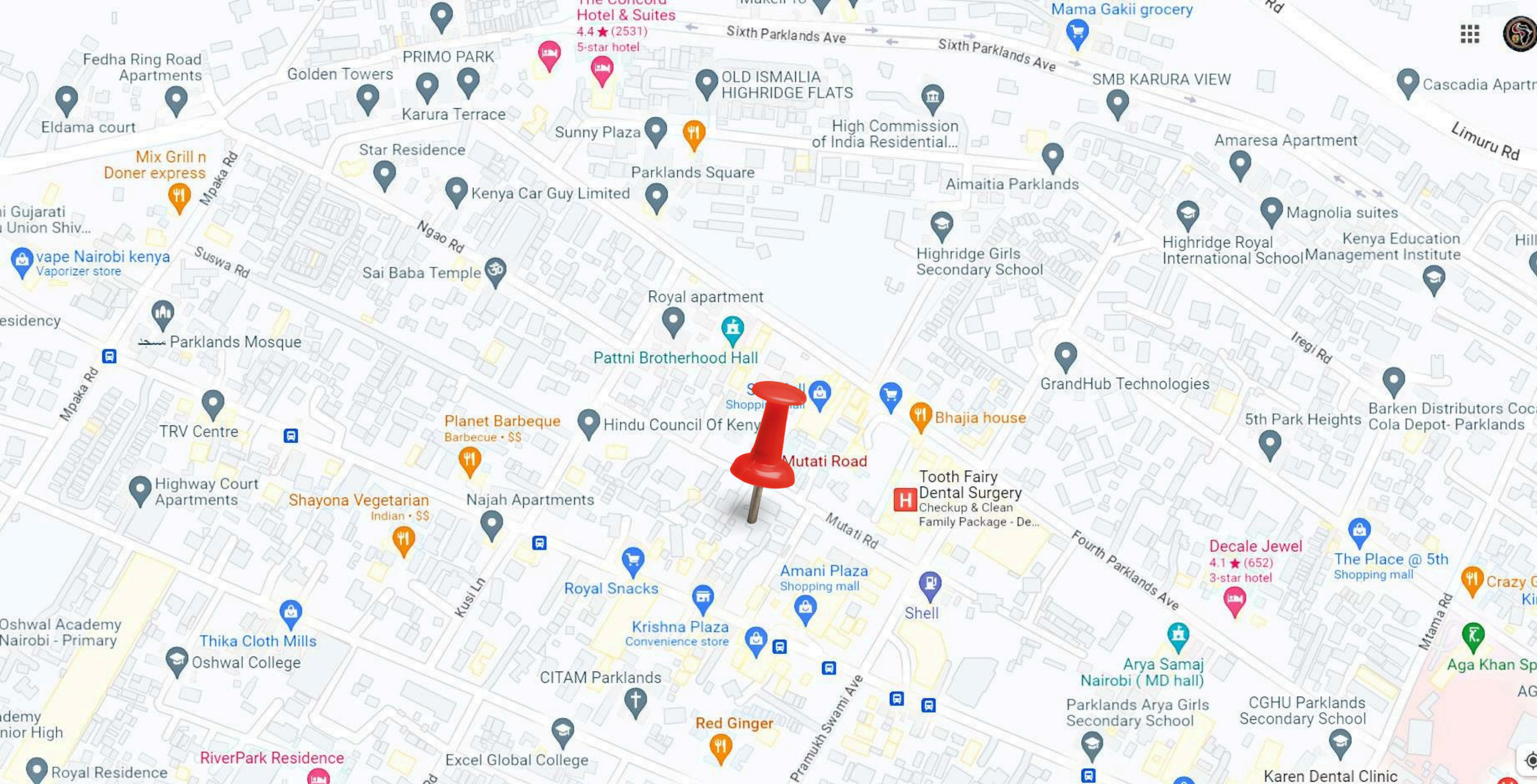
OUR AMENITIES

**JUST TO
MENTION A FEW**



- ✓ Solar Panels
- ✓ Fully Equipped Gym
- ✓ 24/7 CCTV Security
- ✓ Borehole

- ✓ Ample Parking
- ✓ Kids Playground
- ✓ Intercom System
- ✓ High Speed Lifts



LOCATED IN PARKLANDS, MUTATI ROAD.





1ST, 3RD, 5TH, 7TH, 9TH, 11TH, 13TH, 15TH FLOOR - TYPICAL PLAN



2ND, 4TH, 6TH, 8TH, 10TH, 12TH, 14TH, 16TH FLOOR – TYPICAL PLAN



13TH - 16TH FLOOR - TYPICAL PLAN



PENTHOUSE - TYPICAL PLAN



2 BEDROOM APARTMENT (LAYOUT)





2 BEDROOM APARTMENT (107 SQM)



4 BEDROOM APARTMENT WITH DSQ (LAYOUT)





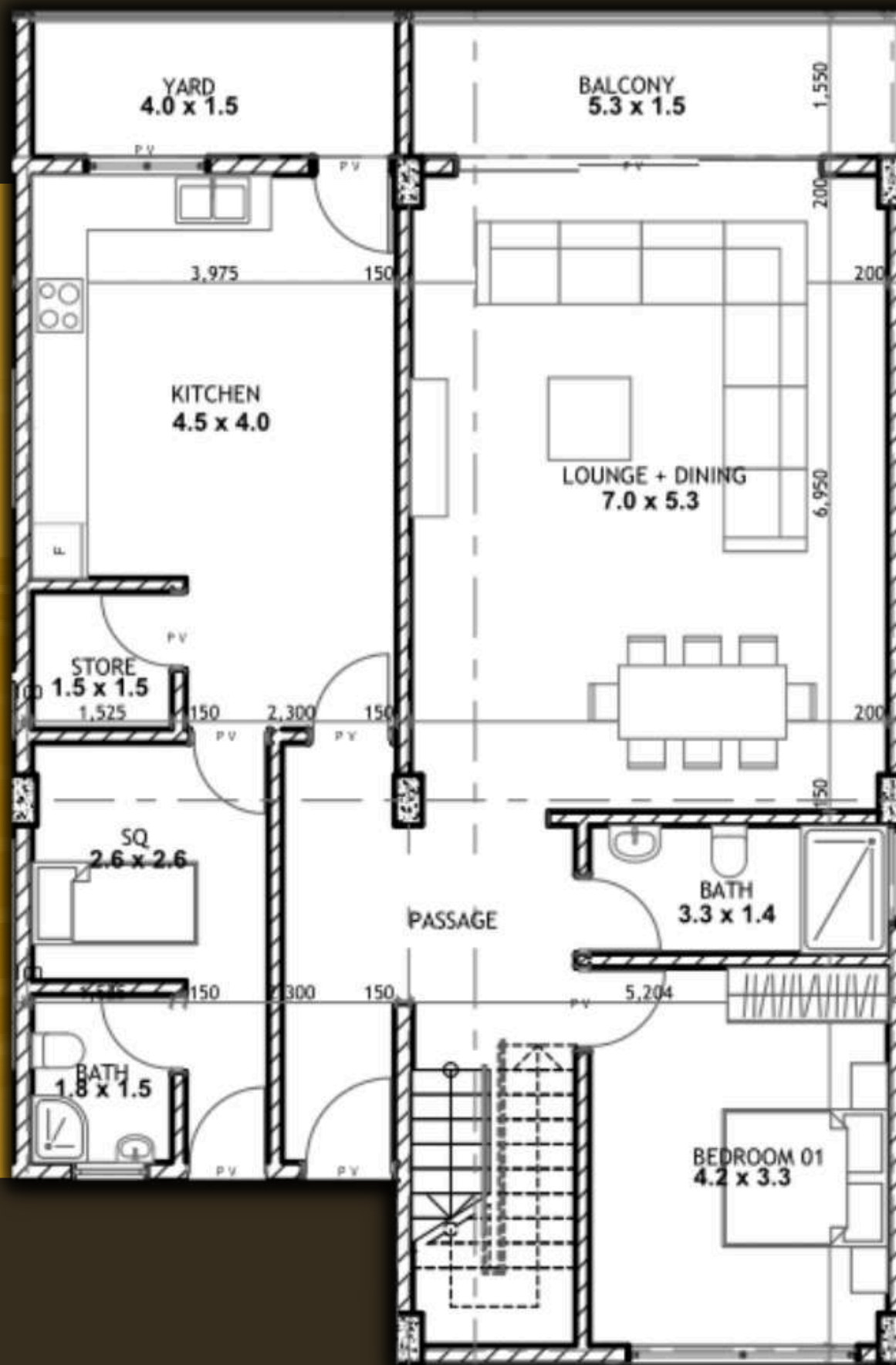
4 BEDROOM APARTMENT WITH DSQ (227 SQM)



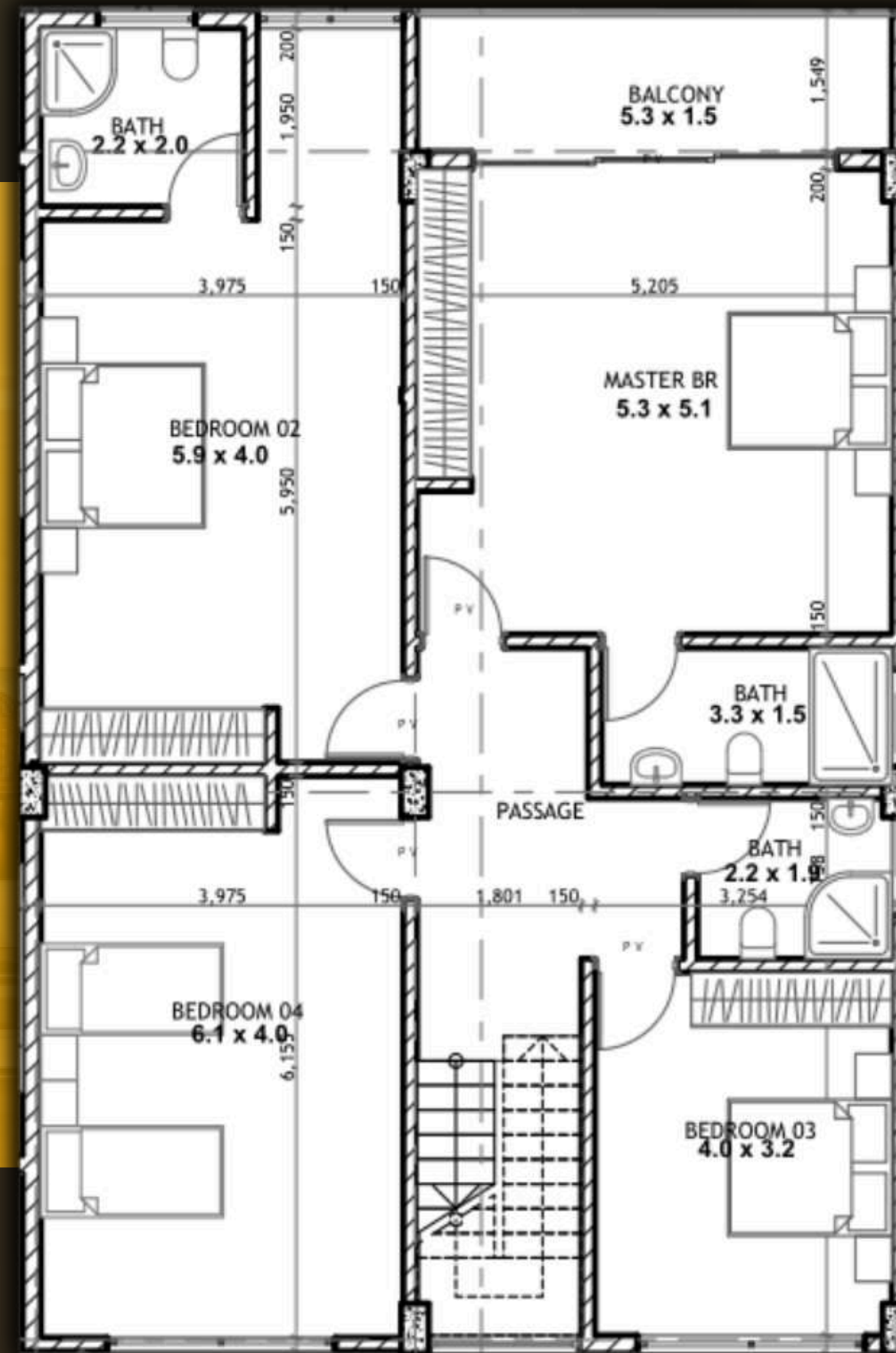
5 BEDROOM DUPLEX WITH DSQ (LAYOUT)



LOWER LEVEL



UPPER LEVEL

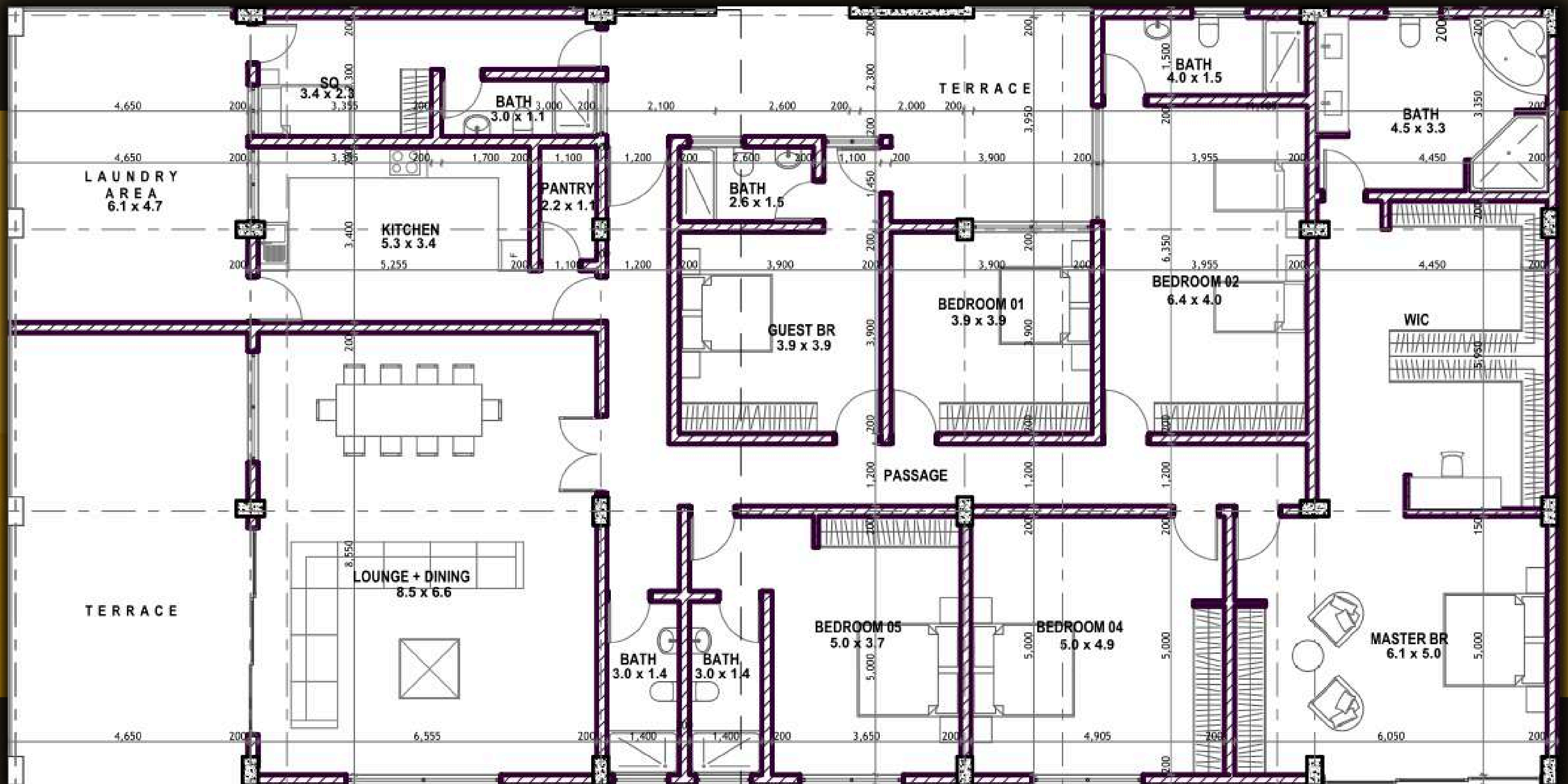


5 BEDROOM DUPLEX WITH DSQ (277 SQM)



6 BEDROOM PENTHOUSE WITH DSQ (LAYOUTS)





6 BEDROOM PENTHOUSE WITH DSQ (504 SQM)



INCLUDING :

- ✓ THE OVAL
- ✓ SARIT CENTRE
- ✓ WESTAGATE MALL
- ✓ AGA KHAN HOSPITAL
- ✓ AVENUE HOSPITAL
- ✓ MP SHAH HOSPITAL
- ✓ DIAMOND PLAZA
- ✓ OSHWAL ACADEMY
- ✓ 10 MINS DRIVE TO CBD
- ✓ HIGHRIDGE PRIMARY SCHOOL
- ✓ AGAKHAN PRIMARY SCHOOL
- ✓ CITY PARK HOCKEY STADIUM

SURROUNDING AMENITIES

Enjoy the unique surrounding amenities that offer a blend of restaurants, schools, hospitals, malls, sports facilities and religious centres, all within a short drive to the Nairobi CBD.



	PAYMENT PLAN
BOOKING	30%
AFTER 4 MONTHS	15%
AFTER 4 MONTHS	15%
AFTER 4 MONTHS	15%
AFTER 4 MONTHS	15%
UPON HANDOVER	10%

**FLEXIBLE 2 YEAR PAYMENT PLAN
ZERO% INTEREST**

**2
YEAR**

- 6 BEDROOM PENTHOUSE 1 – **\$400,000**
- 6 BEDROOM PENTHOUSE 2 – **\$380,000**
- 5 BEDROOM DUPLEX – **\$175,000**
- 4 BEDROOM APARTMENT – **\$145,000**
- 2 BEDROOM APARTMENT – **\$75,000**

**1
YEAR**

- 6 BEDROOM PENTHOUSE 1 – **\$380,000**
- 6 BEDROOM PENTHOUSE 2 – **\$360,000**
- 5 BEDROOM DUPLEX – **\$165,000**
- 4 BEDROOM APARTMENT – **\$135,000**
- 2 BEDROOM APARTMENT – **\$65,000**

CASH

- 6 BEDROOM PENTHOUSE 1 – **\$360,000**
- 6 BEDROOM PENTHOUSE 2 – **\$350,000**
- 5 BEDROOM DUPLEX – **\$160,000**
- 4 BEDROOM APARTMENT – **\$125,000**
- 2 BEDROOM APARTMENT – **\$60,000**

PAYMENT PLAN

